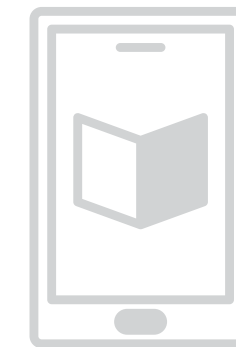
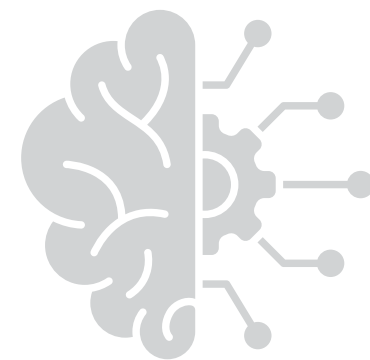




**NEXT-GENERATION AI INTERACTIVE PANELS,
REDEFINING DIGITAL LEARNING EXPERIENCES**



IneX SERIES



IneX Serious



AI Enhanced 4K
Camera (Optional)



8-Microphone Array
With AI Noise Cancellation



Fingerprint Scanner
for Access Control
(Optional)



NFC Card (Optional)

Experience smarter collaboration with the INEUII Premium Series—AI-powered performance, crystal-clear audio, intelligent cameras, and seamless EDLA integration for a truly advanced digital experience.

INNOVATION | PRECISION | INTELLIGENCE

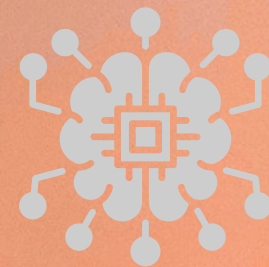
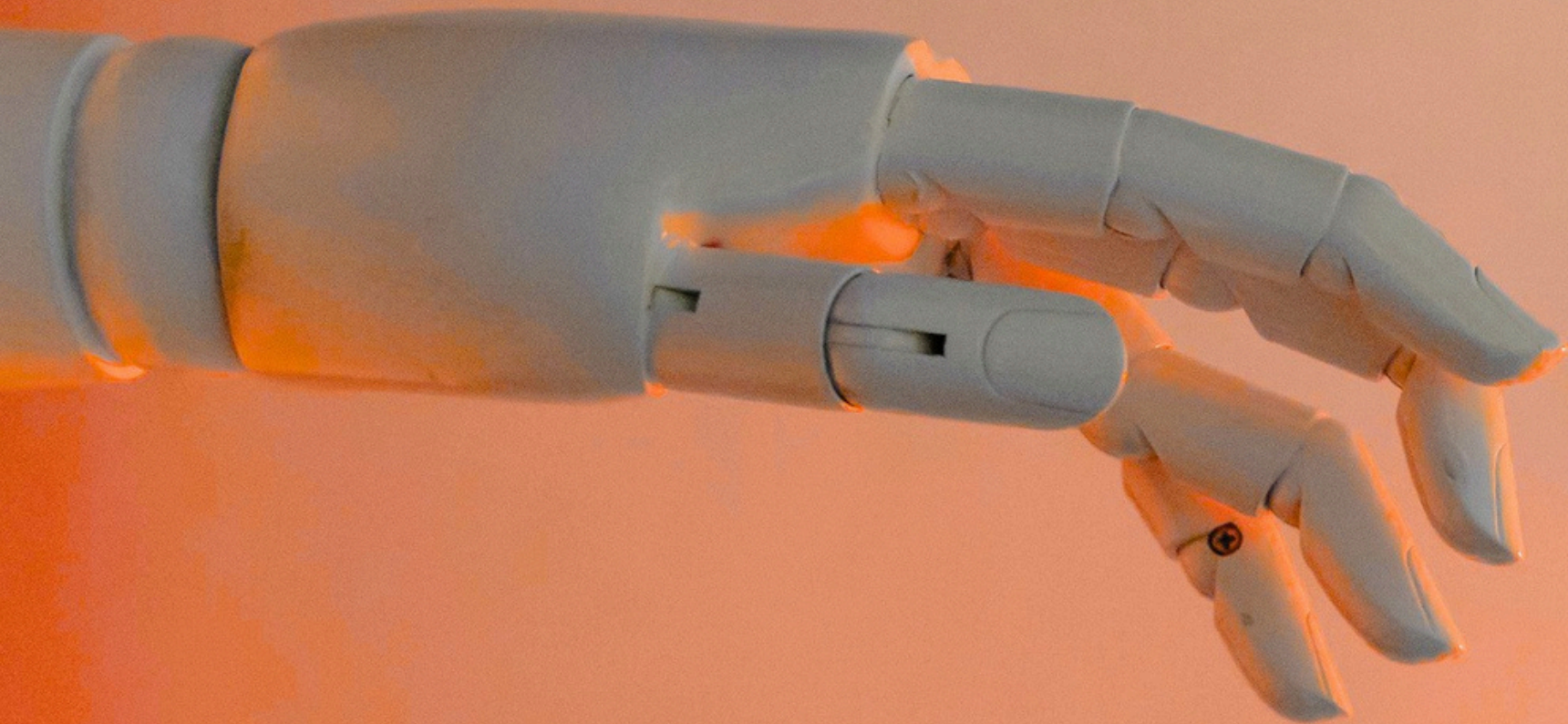


THE INEUU APPROACH



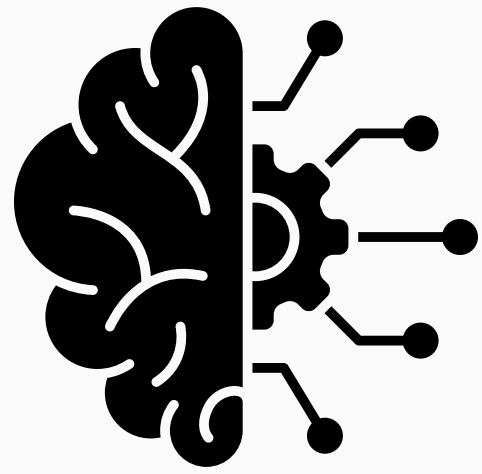
INEUU Touch Display Pvt Ltd is committed to redefining interactive technology through innovation and intelligent design. Our AI-powered solutions enhance communication, collaboration, and learning, delivering efficient, reliable, and future-ready experiences.

- 2000+ PANELS INSTALLED
- 500+ INSTITUTIONS TRUSTED
- PAN INDIA PRESENCE
- GROWING GLOBAL NETWORK



WHERE HUMAN INTELLIGENCE MEETS ARTIFICIAL INTELLIGENCE

Empowering smarter connections, seamless interaction, and the future of intelligent experiences.



INEUU Utility Suite

Smart Solutions to Simplify Learning & Collaboration



INEUTALK™
Smart Classroom
Communication



INEUWATCH™
Real-Time Monitoring



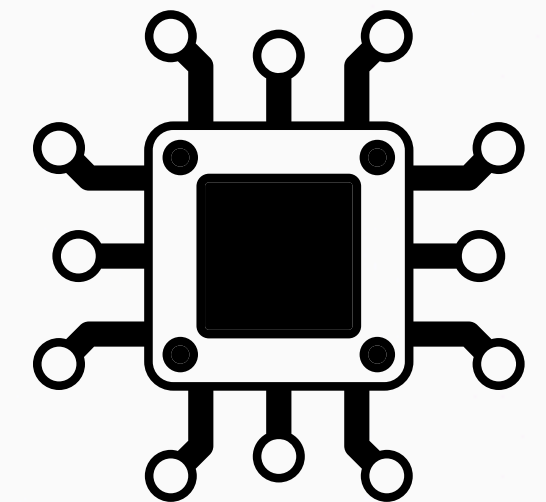
INEUCONNECT™
Wireless Screen Sharing

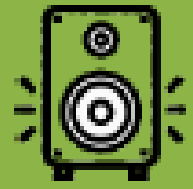


INEUMANAGE™
Centralized Control
System



INEUCAPTURE™
Advanced Recording
Solutions

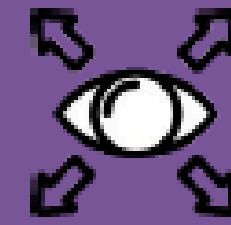




Powerful 2.1 channel sound using 2 front facing speaker & down firing Bose sub-woofer



Whiteboard giving sharp, natural writing experience



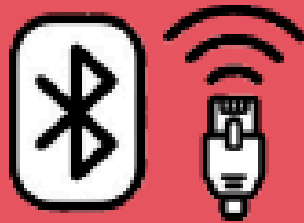
Wide viewing angle upto 178 degree



Energy saving design, Max 300W, consumes <0.5W on standby



Anti-glare coating to absorb up to 80% of light

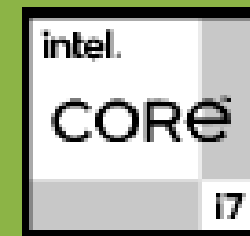


In-built Wi-Fi 6, Ethernet & Bluetooth 5.2

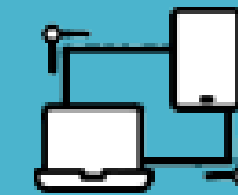


Android version 14
(Upgradable)

Robust Android with an impressive benchmark score of 1300+(Geekbench)



Built-in state-of-the-art **i7 CPU 12th Gen**



Easy Wireless connectivity with laptops and mobile devices



In-built WiFi access point



Open platform, compatible with all e-learning contents



Supports any pen as small as tip of a ball pen

World's thinnest bezel interactive Panel with complete metal body

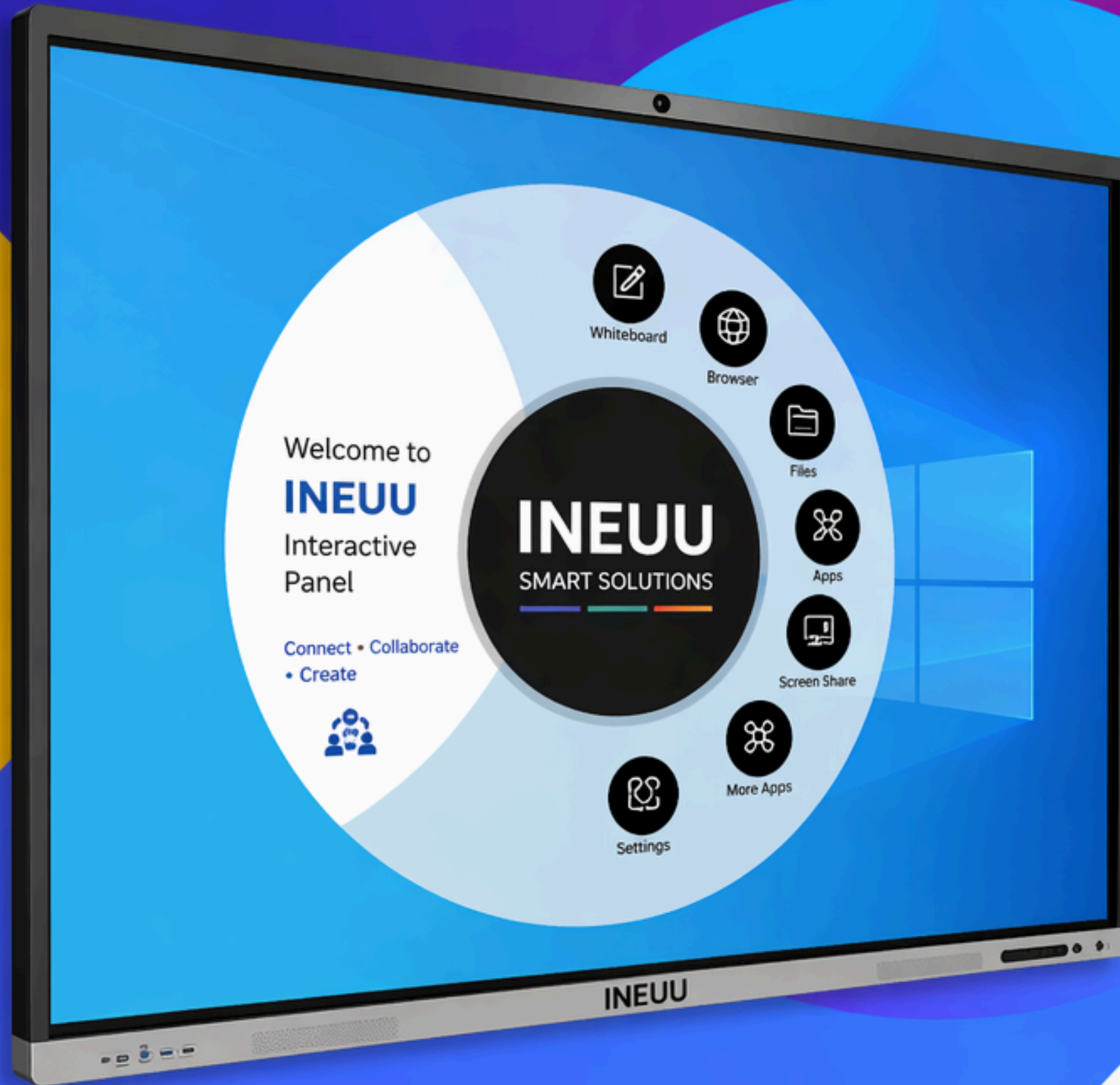


NFC Reader



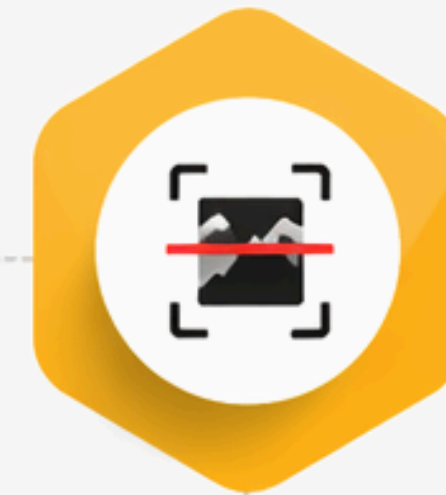
Toughened glass protection

WHAT MAKES US STAND APART?



Scan a QR code to easily insert images into lessons, streamlining visual aid integration for enriched comprehension.

EFFORTLESS IMAGE INSERTION



The system offers teachers advanced multi-touch gestures for easy drawing, selecting, and interactive learning experiences, enhancing their teaching experience



AI CURRICULUM NAVIGATOR

Enables syllabus-based searches, customized by grade level and class pattern for efficient learning.



AI SEARCH

Provides quick suggestions and content generation prompts, including youtube videos and images.



FORMULA RECOGNITION

Formula Recognition simplifies complex equations, automatically solving and presenting clear solutions for teachers with ease.



INEUU

SMART SOLUTIONS

INTELLIGENT SESSION SAVING

Rest assured, our intelligent session-saving feature protects your work by automatically saving every 60 seconds, ensuring teaching continuity without disruptions, even during power outages.



AI MAGIC PEN

Assists in drawing objects and generates a collection of doodles, web images, and AI generated images.



WHATSAPP SHARING & AUTO E-MAIL

Our intelligent panels record classes, allow instant sharing via QR Code, and support WhatsApp sharing and auto email.



INDIAN LANGUAGE COMPATIBILITY

Enhancing accessibility and inclusivity in the learning process, the INE UU panel supports multiple Indian & Foreign languages.

TEXT/SHAPE RECOGNITION WITH MEASUREMENT & AUTO ALIGN OF TEXT

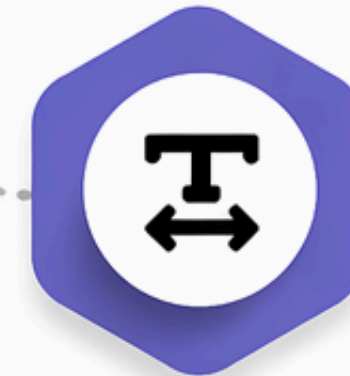
The technology of the INE UU interactive panel converts written/drawn text or shapes into precise, easily readable formats, enhancing efficient learning.



ENDLESS CANVAS/ AUTO SCROLL

Unlimited writing on the smart board with auto-scrolling creates seamless, uninterrupted Teaching experience for teachers.

INEUU
SMART SOLUTIONS



TEXT TRANSLATION



Translate any text added in the board to any Indian/Foreign languages and read them aloud.

MATH SOLVER



In build AI to solve algebra, calculus, and other math problems. And provide step-by-step explanations.

DICTIONARY



Show English definitions, synonyms, examples etc for the selected text. Option to select and copy the dictionary information to canvas is possible here.

INEUU

SMART SOLUTIONS



MULTI CANVAS

Teachers create multiple canvases for simultaneous student interaction, enabling collaborative problem-solving.

SMART SEARCH CAPABILITIES



Our panel facilitates intelligent searches, allowing teachers to access online resources based on their chosen topic, thereby enhancing teaching experience with SMART SEARCH capabilities.

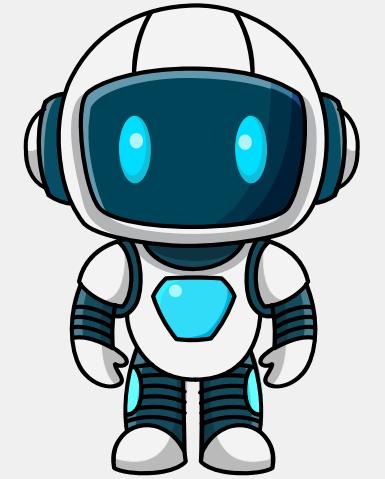
TEXT EXTRACTION FROM IMAGE



Extract any text from the image inserted in the board with ease.

UNLOCKING 3D INNOVATION

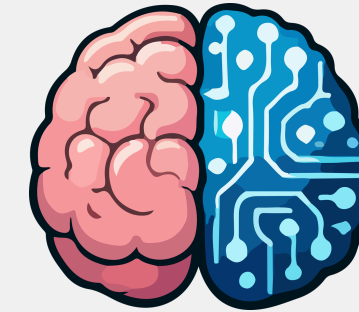
Experience a revolutionary shift in learning with our 3D Models. These models bring conceptual knowledge to life by offering interactive, 360° visualizations of content. Teachers will be able to grasp complex concepts with unprecedented depth, expanding their understanding through immersive teaching experiences.

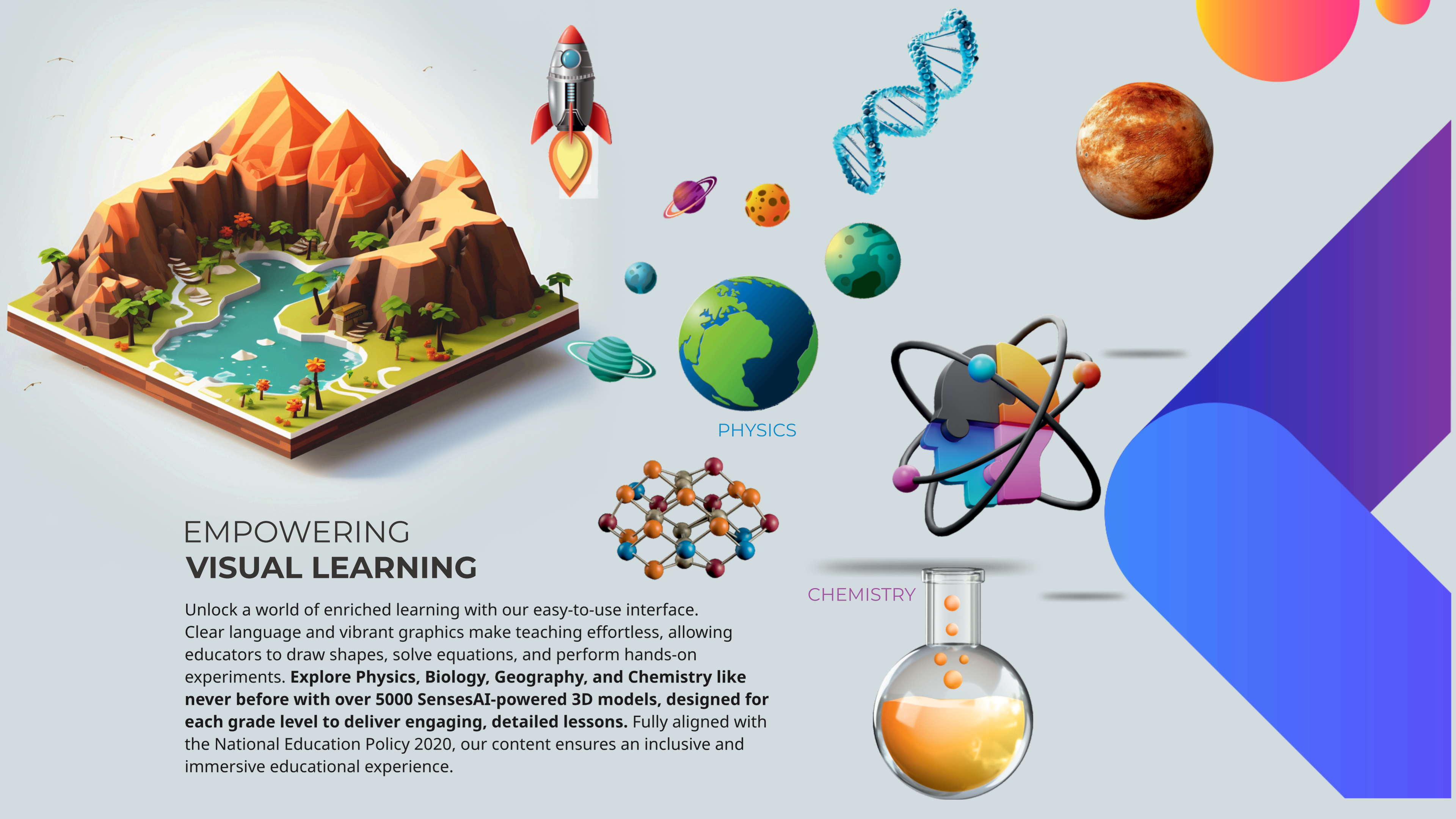


ENHANCED LEARNING THROUGH 3D IMAGES

MORE THAN 5K 3D IMAGES
ARE ALREADY THERE IN SYSTEM.

Take your learning to the next dimension with our 3D Image Insert feature. This innovative capability allows teachers to insert 3D images, providing a hands-on approach to demonstrating topics. With the help of gestural recognition controllers, students can interact with and explore these 3D visuals, tapping into their creativity for a deeper and more engaging educational journey.





EMPOWERING VISUAL LEARNING

Unlock a world of enriched learning with our easy-to-use interface. Clear language and vibrant graphics make teaching effortless, allowing educators to draw shapes, solve equations, and perform hands-on experiments. **Explore Physics, Biology, Geography, and Chemistry like never before with over 5000 SensesAI-powered 3D models, designed for each grade level to deliver engaging, detailed lessons.** Fully aligned with the National Education Policy 2020, our content ensures an inclusive and immersive educational experience.

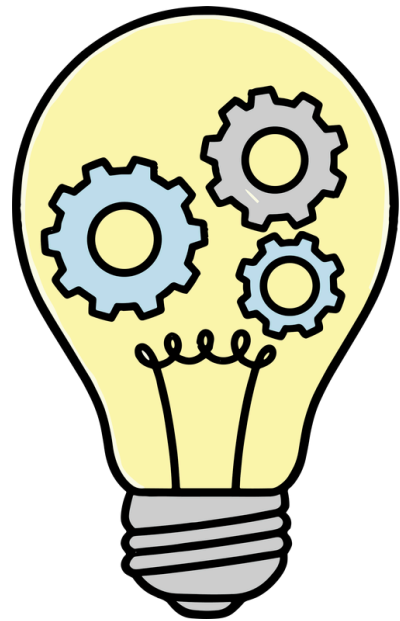
PHYSICS

CHEMISTRY

DEDICATED SERVICE AND SUPPORT

- We empower educators with up to 3 years of comprehensive training and continuous support.
- Our approach ensures seamless onboarding, personalized assistance, and consistent communication to meet institutional needs.

LEARNING, ENGAGE, EMPOWER
Transforming Education Together



We ensure quick and reliable resolution of client concerns through our strong service network across India. Our commitment to after-sales support makes INEUEU a trusted partner for long-term solutions.

INEUEU INNOVATION

Feedback from educators fuels our drive for innovation and excellence. With INEUEU, we are redefining teaching technology, empowering institutions to deliver smarter and more engaging learning experiences. Our commitment to continuous improvement ensures that our solutions evolve with the needs of modern education.

INEUU

IneX Series

ineuu	IneX 65	IneX 75	IneX 86	IneX 98	IneX 105	IneX 110
SCREEN TYPE	SCREEN TYPE	LED with super bright backlit displav Commercial Grade	LED with super bright backlit displav Commercial Grade	LED with super bright backlit displav Commercial Grade	LED with super bright backlit displav Commercial Grade	LED with super bright backlit displav Commercial Grade
Backlight Type	DLED	DLED	DLED	DLED	DLED	DLED
Glass bonding	ZERO bonding Technology	ZERO bonding Technology	ZERO bonding Technology	ZERO bonding Technology	ZERO bonding Technology	ZERO bonding Technology
Resolution	3840x2160, 4K	3840x2160, 4K	3840x2160, 4K	3840x2160, 4K	3840x2160, 4K	3840x2160, 4K
Response Time	< 4ms	< 4ms	< 4ms	< 4ms	< 4ms	< 4ms
Contrast ratio	18000:1	35000:1	36000:1	36000:1	36000:1	36000:1
Brightness	350-400 cd/m2	350-400 cd/m2	350-400 cd/m2	350-400 cd/m2	350-400 cd/m2	350-400 cd/m2
Viewing Angle	178/178	178/178	178/178	178/178	178/178	178/178
Life	50,000 hrs	50,000 hrs	50,000 hrs	50,000 hrs	50,000 hrs	50,000 hrs
Audio Amplifier	In-built, BOSE amplifier 2.1 channel output					
Sub Woofer (Optional) Speaker	2 X 20W and 20W sub-woofer					
Sensing Type	Infrared 20 points writing and 40 point touch					
Touch Response Time	<4ms (typ)	<4ms (typ)	<4ms (typ)	<4ms (typ)	<4ms (typ)	<4ms (typ)
Touch Accuracy	0.3 mm	0.3 mm	0.3 mm	0.3 mm	0.3 mm	0.3 mm
Surface Protection	Toughened glass level 7 MOHS Std.					
Android Module	Android 14.0 (Upgradable)					
Windows Module	Windows 11 Pro, Intel Tiger Lake					
Inbuilt Wifi Access point	2.4GHz/5GHz					
Bluetooth	2.1+EDR/4.2/5.0	2.1+EDR/4.2/5.0	2.1+EDR/4.2/5.0	2.1+EDR/4.2/5.0	2.1+EDR/4.2/5.0	2.1+EDR/4.2/5.0
Connectivity	LAN RJ45, USB 2.0/3.0/3.1 Type C, HDMI					
Inbuilt Camera (Optional)	Sony CMOS 4800 Mega Pixel					
Inbuilt Microphone	8 Array Microphone					
Fingerprint access control	Yes					
Power Requirement	100V-240V AC 50/60HZ	100V-240V AC 50/60HZ	100V-240V AC 50/60HZ	100V-240V AC 50/60HZ	100V-240V AC 50/60HZ	100V-240V AC 50/60HZ
Power Consumption	<340W	<600W	<700W	<700W	<800W	<800W
Operating Temperature	-10 to 55°C	-10 to 55°C	-10 to 55°C	-10 to 55°C	-10 to 55°C	-10 to 55°C
Operational Humidity	10% to 90 %	10% to 90 %	10% to 90 %	10% to 90 %	10% to 90 %	10% to 90 %
Dimensions L*H*W	1511.6 x 920.6 x 85.9 mm	1722.5 x 1034.6 x 87.1 mm	1967.9 x 1170.1 x 87.1 mm	2257 x 2 x 1335 x 2 x 118 ± 2 mm	2327 × 1309 × 118 ± 2 mm	2435 x 2 x 1370 x 2 x 118 ± 2 mm
Net Weight	44.1 Kg	54.9 Kg	69.15 Kg	113.5 Kg	115.5 Kg	125.5Kg



INEUU
AHEAD OF THE CURVE

INEUU Touch Displays Private Limited



A-20, Sector 68, Gautam Buddha Nagar, Noida, Uttar Pradesh
201301



+91 9810110049 +91 9999700536 +91 9718261861



rohit.kohli@ineuu.com, kritik.kohli@ineuu.com
gaurav.sharma@ineuu.com

Support & Training

Info@ineuu.com



[http.ineuu.com](http://ineuu.com)